

# Platform Copers - Standard



## Product Data Sheet

### PHYSICAL PROPERTIES:

#### Tolerances:

Length +/- 6mm, Width +/- 6mm,  
Thickness +/- 6mm

**Finish:** Smooth Concrete

#### Concrete strength:

Typical 28 day compressive  
strength = 55N/mm<sup>2</sup>

#### Density:

Typically 2500kg/m<sup>3</sup>

#### Concrete Design:

DC2 to BS8500 air entrained  
Colour:  
Light Grey

#### Carbon Footprint -

TYPE A: 53.7kg co2 per unit  
TYPE B: 85.8kg co2 per unit

### DESIGN:

\*Network rail/Great British railway approved

\*Manufactured in accordance with BS8110  
and Network rail specifications and adheres  
to BS7976

\*Meets NR/L3/CIV/030

\*Pigmented options available

\*Exposed/etched finish

\*Optional lifting anchors

### QUALITY

\*100 year design life

#### \*Strength:

Typical 28 day compressive  
strength = 55N/mm<sup>2</sup>

#### \*Reinforcement:

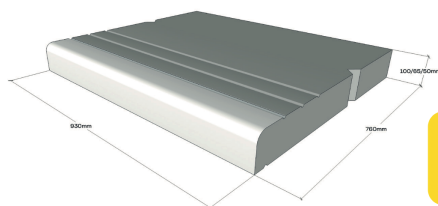
A252 mid depth to BS4449

#### \*Slip Resistance:

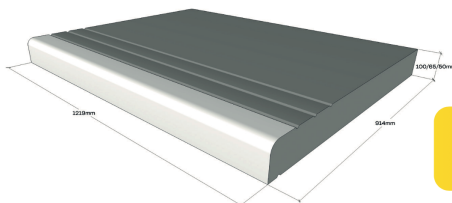
Slip/Skid: Mean Unpolished Skid Resistance  
Value (USRV) >55

\*Two part polyspartic non-slip paint

Bespoke design services available



TYPE A 930 x 760 x 100/65/50  
179kg



TYPE B 1219 x 914 x 100/65  
286kg



**Sales Office &  
Precast Works:**  
Hoyle Mill Road  
Kinsley  
Pontefract  
West Yorkshire  
WF9 5JB

**Tel:** 01977 618994  
**Fax:** 01977 616150  
**Email:** info@camelprecast.co.uk