

King Post Planks

PHYSICAL PROPERTIES:

Tolerances:

Length +/- 6mm, Width +/- 6mm,
Thickness +/- 6mm

Finish: Smooth Concrete

Concrete strength:

Typical 28 day compressive
strength = 55N/mm²

Density:

Typically 2500kg/m³

Concrete Design:

DC2 to BS8500 air entrained

Colour:

Light Grey

Carbon Footprint - 20kg CO₂ per unit.

DESIGN:

*Any size

*Any thickness

*Plain or dog bone ends

*Lifting anchors

*Approved designs

*Weep holes optional

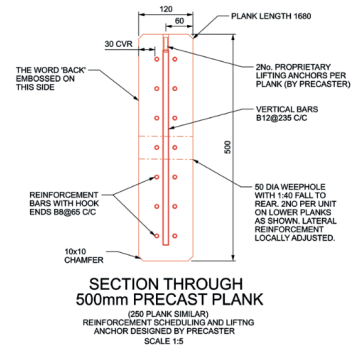
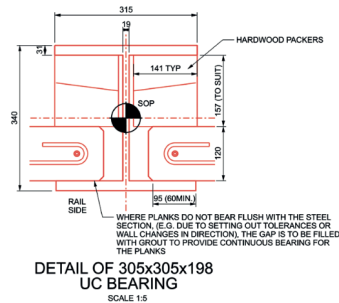
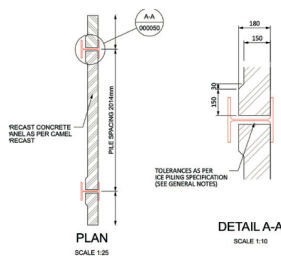
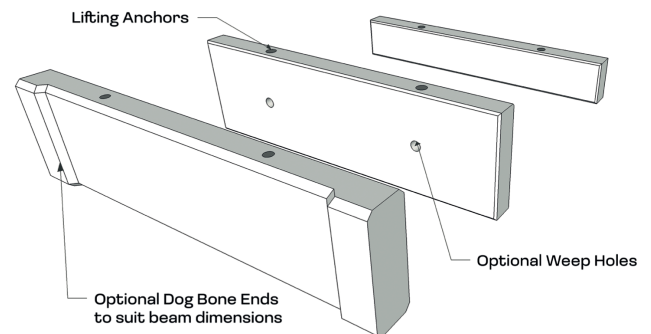
QUALITY

*Wet cast in high quality bespoke moulds

*Manufactured using 55N/mm² concrete

*Supplied on pallets for ease of handling on site.

Approved GBR Designs



Sales Office & Precast Works:
Hoyle Mill Road
Kinsley
Pontefract
West Yorkshire
WF9 5JB

Tel: 01977 618994
Fax: 01977 616150
Email: info@camelprecast.co.uk